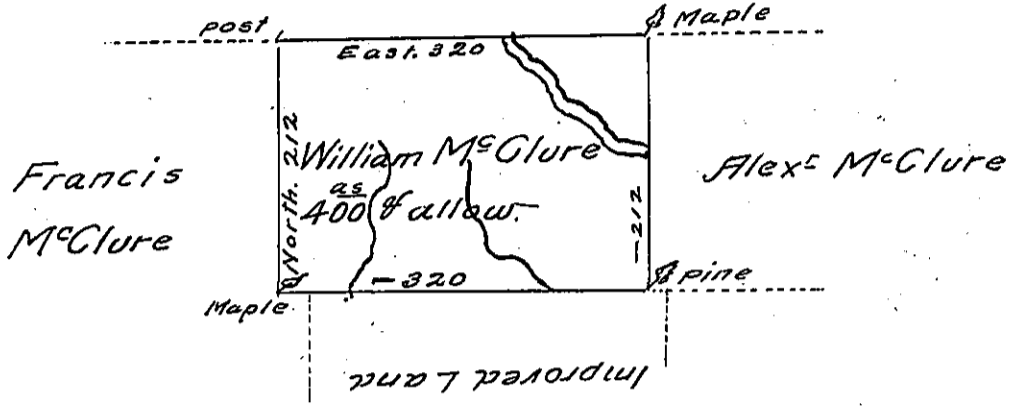


Holland Com^z lands



A Draft of a Tract of Land Situate in District No 6 north
 & West of the rivers Ohio and Allegheny & Conewango Creek
 in Allegheny-now Warren County containing Four hundred
 acres with the usual allowance of six p^c Cent for roads &c.

Surveyed the 24th day of July 1800 to William M^cClure
 on his Warrant dated the 4th day of January 1794

Alexander M^cDowell D.S.

To _____ Esquire

Surveyor General

IN TESTIMONY that the above is a copy of the original remaining on file in
 the Department of Internal Affairs of Pennsylvania, made
 conformably to an Act of Assembly approved the 16th day of
 February, 1833, I have hereunto set my Hand and caused
 the Seal of said Department to be affixed at Harrisburg,
 this thirteenth day of February 1906

Lauch B. Brown
 Secretary of Internal Affairs